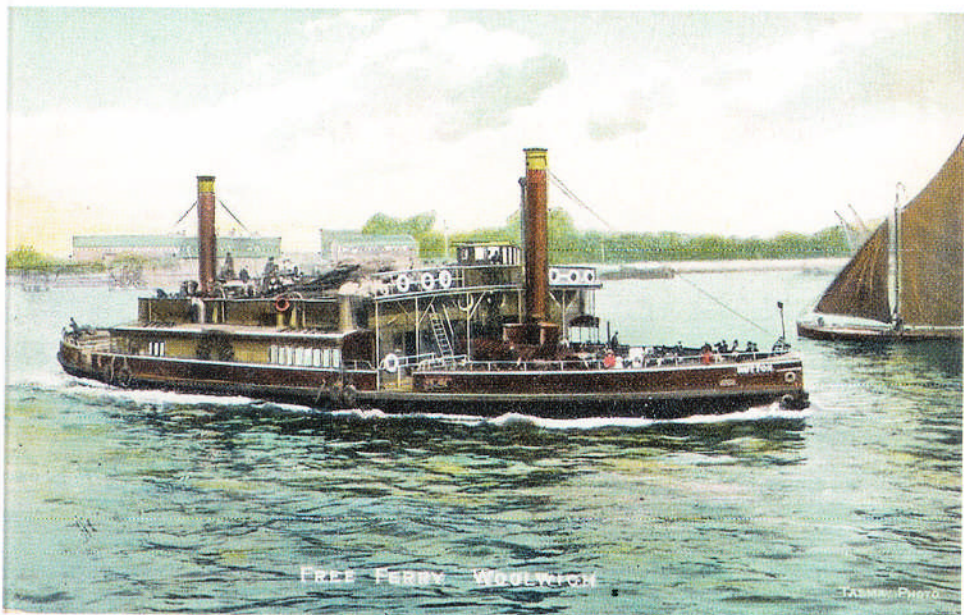




The Mathematical Gazette



Reflections on the Woolwich Ferry

Volume 97
Number 539
July 2013

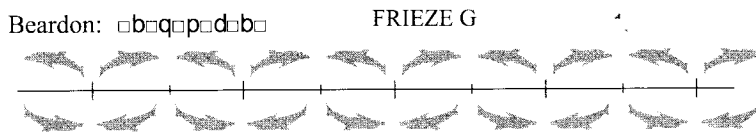
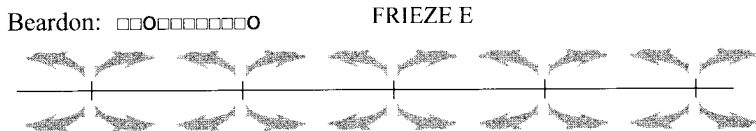
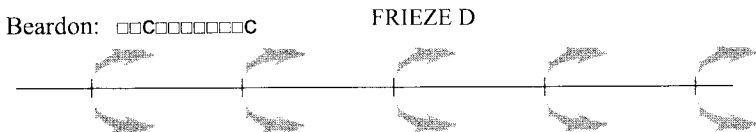
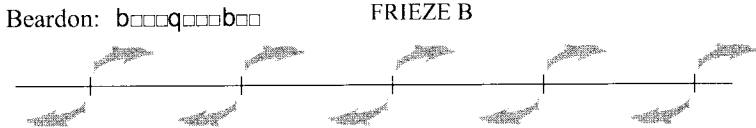


www.m-a.org.uk

THE MATHEMATICAL ASSOCIATION

£33.00

for the only symmetry constraint on the object which repeats (in the writer's depiction, an arrangement of four dolphin motifs) is that it should have two mutually perpendicular mirror planes aligned with those of the frieze.



Reference

1. A. F. Beardon, Frieze groups, cylinders, and quotient groups, *Math. Gaz.*, **97** (March 2013) pp. 95-100.